

	<u>Colours / Farben</u>	<u>Elise 111 R</u>	<u>Netto</u>	<u>inkl. 16% MwSt.</u>
<u>Ex-works price in Euro´s / Preise ab Werk in Euro</u>			36.120,00	41.900,00
1 POWERTRAIN SPECIFICATION				
141kW powertrain with 6-speed gearbox / 141 Kw, 6-Gang Schaltgetriebe		S		
No Oil Coolers - Cool Climates / kein Ölkühler, kühles Klimata				
Single Oil Coolers - Hot Climates / einzelner Ölkühler, warmes Klimata				
2 VEHICLE SPECIFICATION / Fahrzeug				
Cross-drilled brake discs / gelochte Bremsscheibe		S		
ABS with servo assisted brakes / ABS mit Bremskraftverstärker		S		
8-spoke lightweight cast alloy wheels / 8- Speichen Leichtmet. Felgen poliert		S		
Yokohama AD07 tyres / Reifen Yokohama AD07		S		
Tyre puncture repair aerosol / Reifenprofil aerosol		S		
Tool kit / Bordwerkzeug		S		
3 EXTERIOR SPECIFICATION / außen				
Solid paint / Lackierung		S		
Door mirror covers - Body Coloured / Außenspiegel in Fzg. Farbe		S		
Soft-top (Black) / schwarzes Soft Top		S		
3-piece rear diffuser with Silver anodised finish / 3- Teiliger Heckdiffuser		S		
Sill stone-chip protection film / Steinschlag Schutzfolie		S		
Front mud-flaps / Schmutzfänger vorne		S		
4 INTERIOR SPECIFICATION / innen				
Carpet mats - black / Fußmatten schwarz		S		
Lightweight aluminium passenger foot-rest / Boden Beifahrer mit Stütze aus Aluminium		S		
Cloth Probax seats - black / Sitze schwarz		S		
Acrylic capped door inserts / Einsätze Tür Acryl		S		
Cloth door inserts / Tür Einsätze		S		
Central door locking / Zentralverriegelung		S		
Polished aluminium window winders / polierter Scheibenrahmen Aluminium		S		
Face-level air vents / Entlüftungsöffnungen		S		
Lightweight aluminium foot-well divider / Fußmatte mit Aluminiumstütze		S		
Glove dash panel / Handschuhfachablage		S		
Perforated leather gear-lever gaiter / Schaltsack perforiert		S		
Plain/perforated leather steering wheel / Lenkrad perforiert		S		
Polished aluminium gear-knob / Schaltknopf poliert		S		
Polished aluminium handbrake sleeve / Handbremshebel poliert		S		
Polished aluminium heater control knobs / Aluminiumheizung poliert , Steuerelemente		S		
Plain leather sun-visors / Sonnenblende Leder		S		
5 ENTERTAINMENT AND SECURITY SPECIFICATION				
	<u>Colours</u>	<u>Elise 111R</u>	<u>Pricing</u>	
Audio Kit:				
Blaupunkt light weight, ultra-flat, coaxial front speakers (pair)/ Blaupunkt ultra-flache, vordere Koaxiallautsprecher		S		
Blaupunkt 2-way coaxial rear speakers / Blaupunkt hintere Koaxiallautsprecher		S		
Radio receiver wiring loom including dipole aerial kit / Radio Dipolantenne		S		
Blaupunkt radio, CD player / Blaupunkt Radio/CD Spieler		S		
Immobiliser (Thatcham approved) / Wegfahrsperrung		S		
Remote activated alarm (Thatcham approved) / Alarmanlage		S		
OPTION PACKS				
Touring Pack:				
Electric Windows / el. Fensterheber		O	2.349,14	2.725,00
Stowage Net / Gepäcknetz				
Full Leather or Alcantara Interior (See below choice of colours) / Glattleder, Alcantaraleder				
(If Leather) / Glattleder	ack / Red / Cream(Magnolia) / Biscuit			
(If Alcantara) / Leder	Black / Red / Blue			
Sound Insulation / Geräuschdämmung				
Full Carpets - Black / Bodenteppiche schwarz				
Aux Driving Lamps / Zusatzscheinwerfer				
Insulated Soft Top / wärmeisolierendes Stoffverdeck				
Enhanced Blaupunkt Touring pack radio / hochwertiges Blaupunkt Radio				
Super Touring Pack (Touring Pack plus):				
Air Bags + USA Interior / Airbags und USA interior		O	1.999,14	2.319,00
Embroidered Logo Floor mats - Black / Bodenmatten schwarz mit Logo bestickt				
Trinket Tray Divider / Ablagefach				
Handbrake Gaiter - Black / Handbremsack schwarz				
Cup Holder / Getränkehalter				
Leather Shift Knob / Schaltknopf Leder				
Sports Pack:				
Twin Oil Coolers / zweiter Ölkühler		O	2.349,14	2.725,00
Traction Control / zuschaltbare Antischlupfregelung				
Bilstein sports suspension - non adjustable / Bilstein Sportfahrwerk				
6J 7-twin spoke, forged alloys wheels Hi-Power Silver / 6J 7-Speichen geschmiedete Felgen in Silber				
Querstrebe hinter den Sitzen für Halterung Hosenträgergurte				
Pro Bax Sportsitze				
Super Sports Pack (Sports Pack plus):				
1-way adj Bilstein dampers - Remote reservoir on front dampers / 1-Weg Bilsteindämpfer mit Verstellung		O	2.999,14	3.479,00
Adjustable Front Anti-Roll bar / justierbarer Querstabilisator vorn				
Double Shear Rear Toe Link Brace / Querlenkerhalterung				
Yokohama AO48 Tyres / Yokohama AO48 Reifen				
6.5J Forged alloy wheels - Hi Power Silver, 7-twin spoke / Ultraleichte, geschmiedete Leichtmetallfelgen mit 7-Speichen in silber				
T45 main hoop / T45 Überrollbügel				

STANDALONE OPTIONS

Air conditioning unit / Klimaanlage	O	1.641,38	1.904,00
Limited Slip Differential (specified with Traction Control or Sports Pack) / Sperrdifferential (nur mit Antischlupfregelung od	O	1.349,14	1.565,00
Traction Control / Antischlupfregelung	O	599,18	695,00
Hard Top / Hard Top	O	1.525,00	1.769,00
Black cast 8 spoke alloy wheels and diffuser / schwarze 8- Speichen Felgen und Diffuser	O	387,00	450,00

PAINT COLOUR OPTIONS**Solid Paint / Lackierung**

Ardent Red / leidenschaftliches Rot	NCO		
British Racing Green (new) / Britisch racing Grün (neu)	NCO		
Saffron Yellow / Saffran Gelb	NCO		

Metallic Paint / Metallic Lackierung

Arctic Silver (Modified) / arktisches Silber (geändert)	O	776,73	901,00
Aubergine Purple / Purpur Aubergine	O		
Canyon Red (new) / Schlucht Rot (neu)	O		
Magnetic Blue / magnetisches Blau	O		
Nightfall Blue / dunkles Blau	O		
Polar Blue / Polarblau	O		
Racing Green (Modified) / Racing Grün (geändert)	O		
Solar Yellow (new) / Solar Gelb (neu)	O		
Starlight Black / schwarz	O		
Storm Titanium (Modified) / Titanium (geändert)	O		

Extreme Paint / Extrem Lackierung

Aspen White (new) / Espen weiss (neu)	O	1.188,79	1.379,00
Autumn Gold (new) / Herbstgold (neu)	O		
Chilli Red (new) / chili Rot (neu)	O		
Chrome Orange / chrome Orange	O		
Graphite Grey (Modified) / Graphit Grau (geändert)	O		
Krypton Green / Grün	O		
Laser Blue (Modified) / Laser Blau	O		
Phantom Black (new) / dunkles Schwarz (neu)	O		

Custom Paint / Sonderlackierung

Paint to sample	O	POA	
-----------------	---	-----	--

KEY / Legende

S = STANDARD / Standart
O = OPTION / Möglichkeit
NCO = NO COST OPTION / keine zusätzl. Kosten
POA = PRICE ON APPLICATION / Preis auf Anfrage

NOTES / Mitteilung**Super Packs can only be ordered with the base pack**

Super Packs können nur in Verbindung mit dem Base Pack bestellt werden.

The Lotus Elise is supplied in compliance with current European whole vehicle type approval.

Unless specifically agreed in writing, Lotus will not undertake any modification that might be required to meet local market legislative and/or homologation requirements.

Vehicles are sold under the condition that the buyer ensures it meets and complies with local import, tax, legal or homologation regulations.

Lotus reserves the right to change vehicle specification and price at any time.

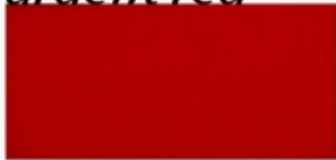
Lotus behält sich das Recht vor, jederzeit Änderungen an der Fahrzeugausstattung und am Preis vornehmen zu können.

standard

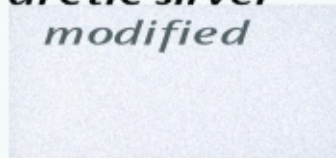
metallic

lifestyle

ardent red



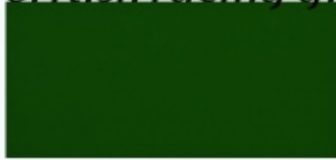
*arctic silver
modified*



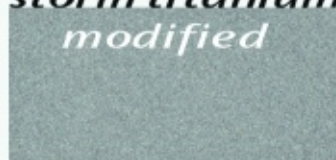
*aspen white
new*



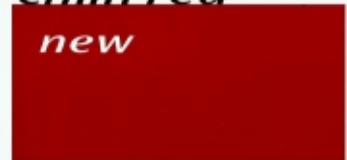
british racing green



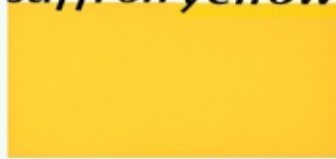
*storm titanium
modified*



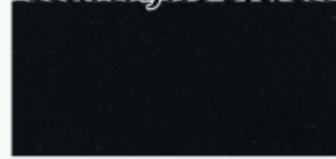
*chilli red
new*



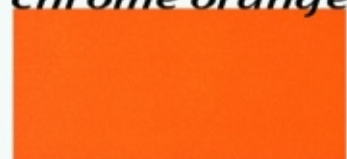
saffron yellow



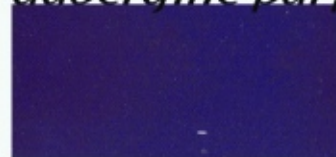
starlight black



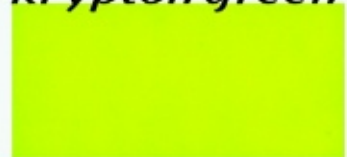
chrome orange



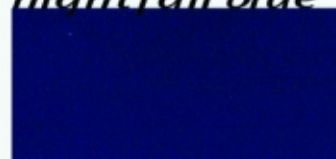
aubergine purple



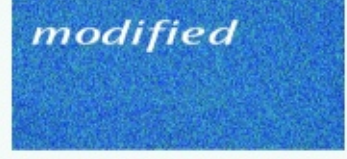
krypton green



nightfall blue



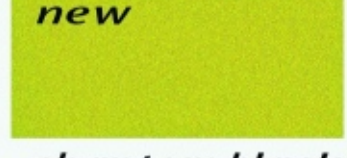
*laser blue
modified*



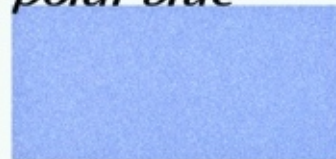
magnetic blue



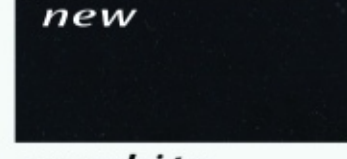
*autumn gold
new*



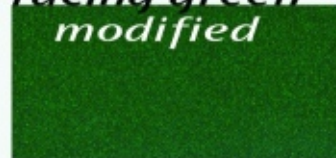
polar blue



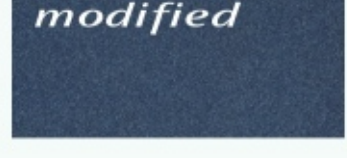
*phantom black
new*



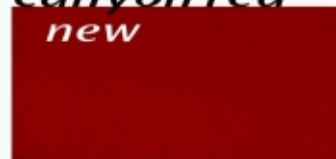
*racing green
modified*



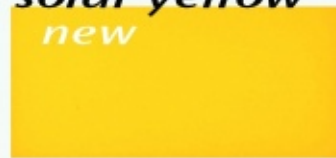
*araphite
modified*



*canyon red
new*



*solar yellow
new*



2006 paint colours **EU**